
Classification with decision trees

Lecture 2



Decision trees

- ▶ Decision support tool
- ▶ Input: a situation or an object described by a set of attributes
- ▶ Output: decision

Decision trees

- Supervised learning
- Tree induction algorithm
- Algorithm design issues
- Applications of decision trees

Decision tree – mental model

- ▶ Situation: restaurant
- ▶ Question: to leave or to stay?

Decision trees

- Supervised learning
- Tree induction algorithm
- Algorithm design issues
- Applications of decision trees



Decision tree – mental model

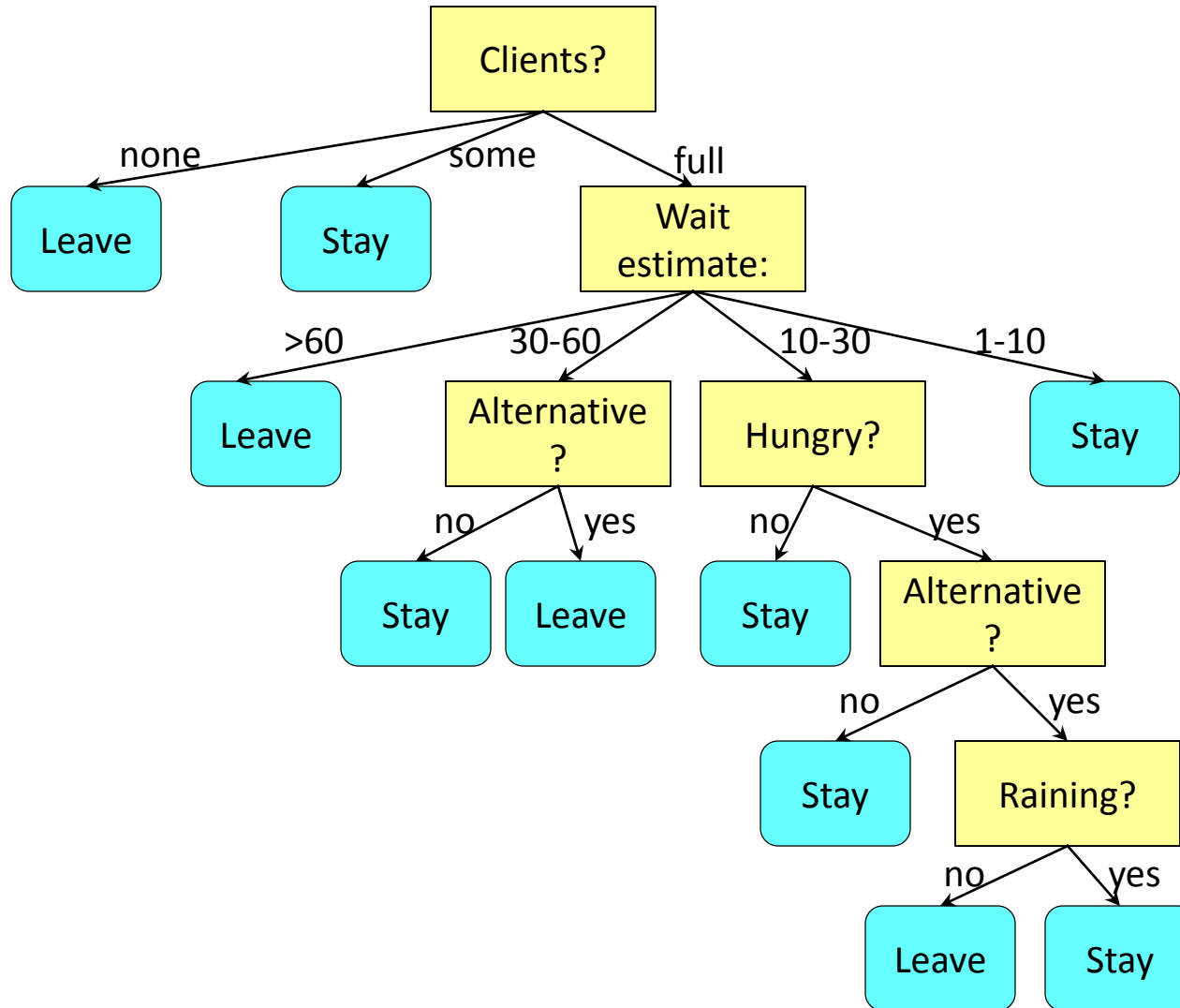
- ▶ Situation: restaurant
- ▶ Question: to leave or to stay?
- ▶ Set of important attributes:
 - ▶ Alternative restaurants: yes, no
 - ▶ Am I hungry?: yes, no
 - ▶ Clients?: none, some, full
 - ▶ Is it raining?: yes, no
 - ▶ Wait estimate: 0-10, 10-30, 30-60, >60 min

Decision trees

- Supervised learning
- Tree induction algorithm
- Algorithm design issues
- Applications of decision trees



Decision tree – mental model

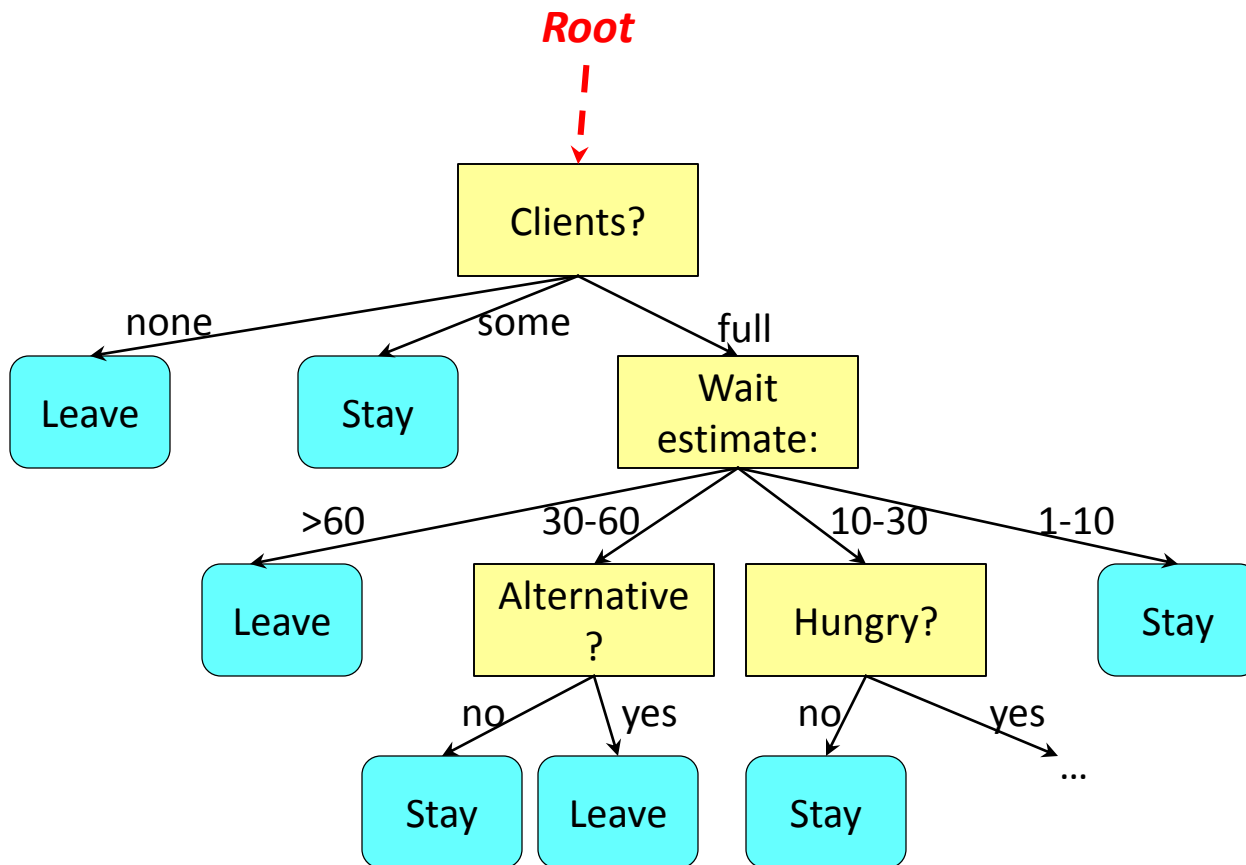


Decision trees

- Supervised learning
- Tree induction algorithm
- Algorithm design issues
- Applications of decision trees

► We have many such models in our brain

Decision tree – structure

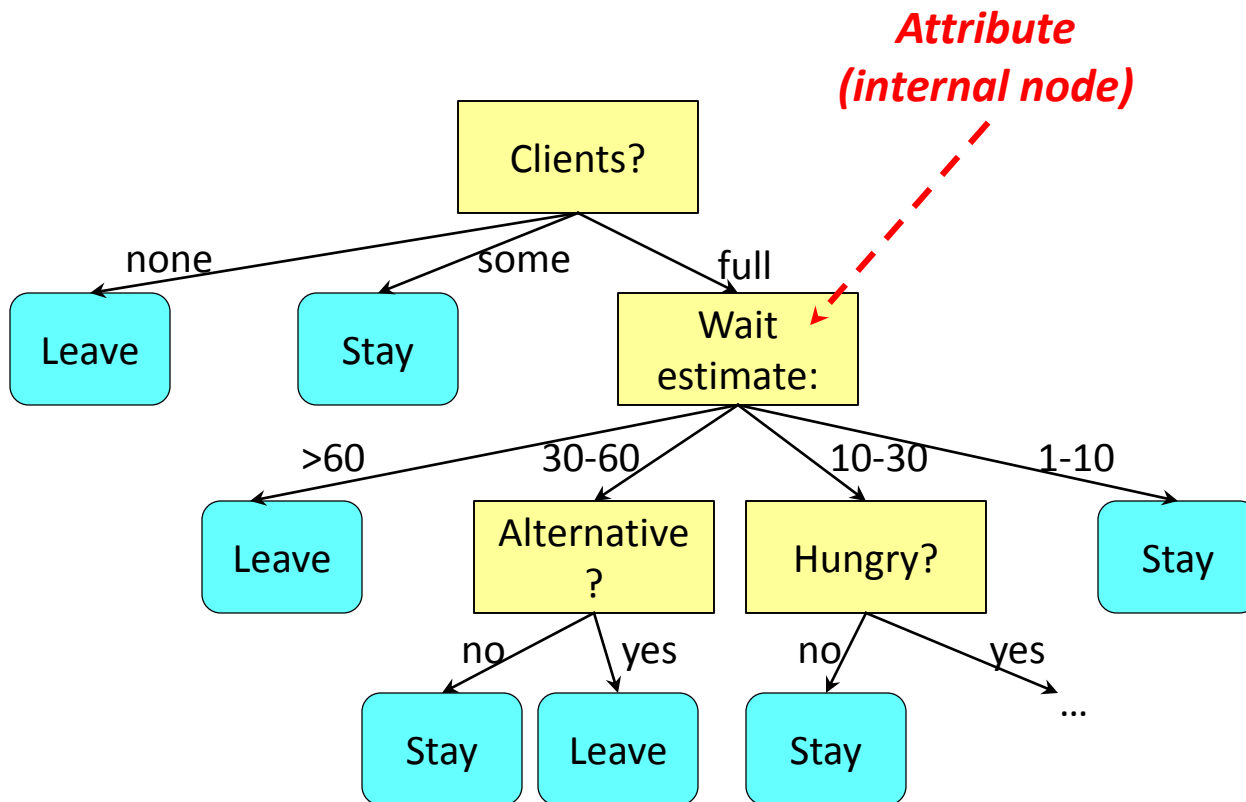


Decision trees

- Supervised learning
- Tree induction algorithm
- Algorithm design issues
- Applications of decision trees



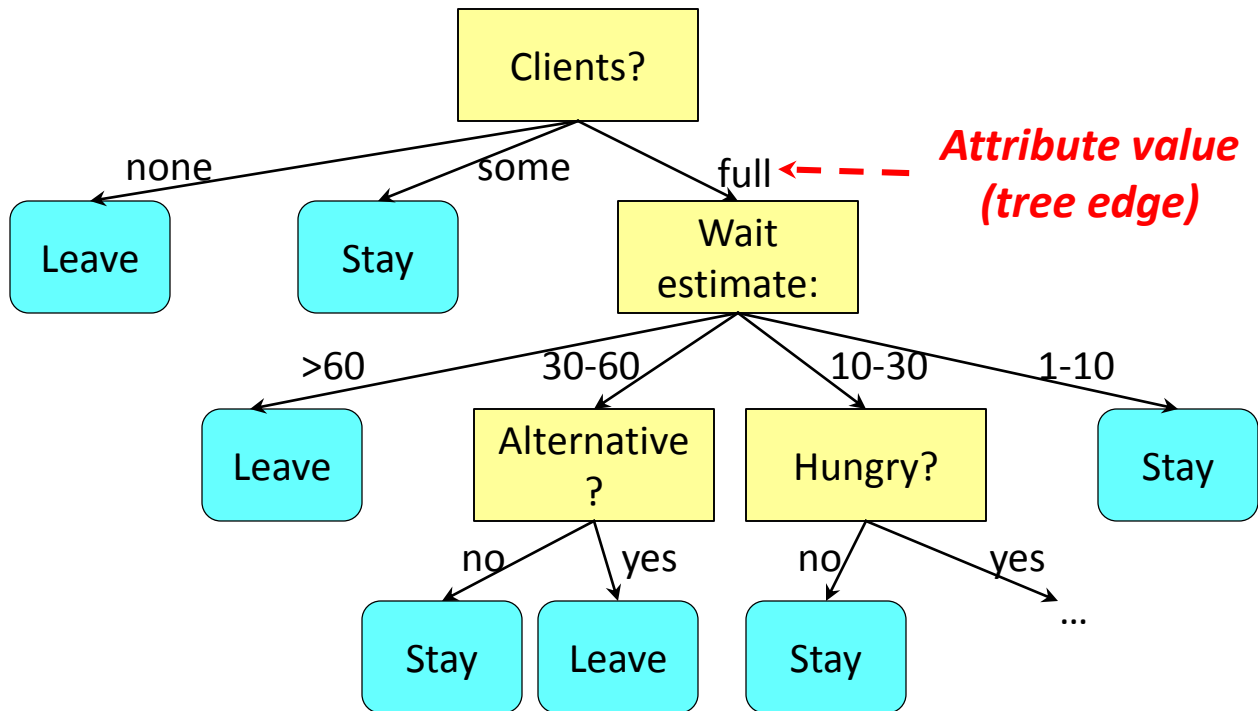
Decision tree – structure



Decision trees

- Supervised learning
- Tree induction algorithm
- Algorithm design issues
- Applications of decision trees

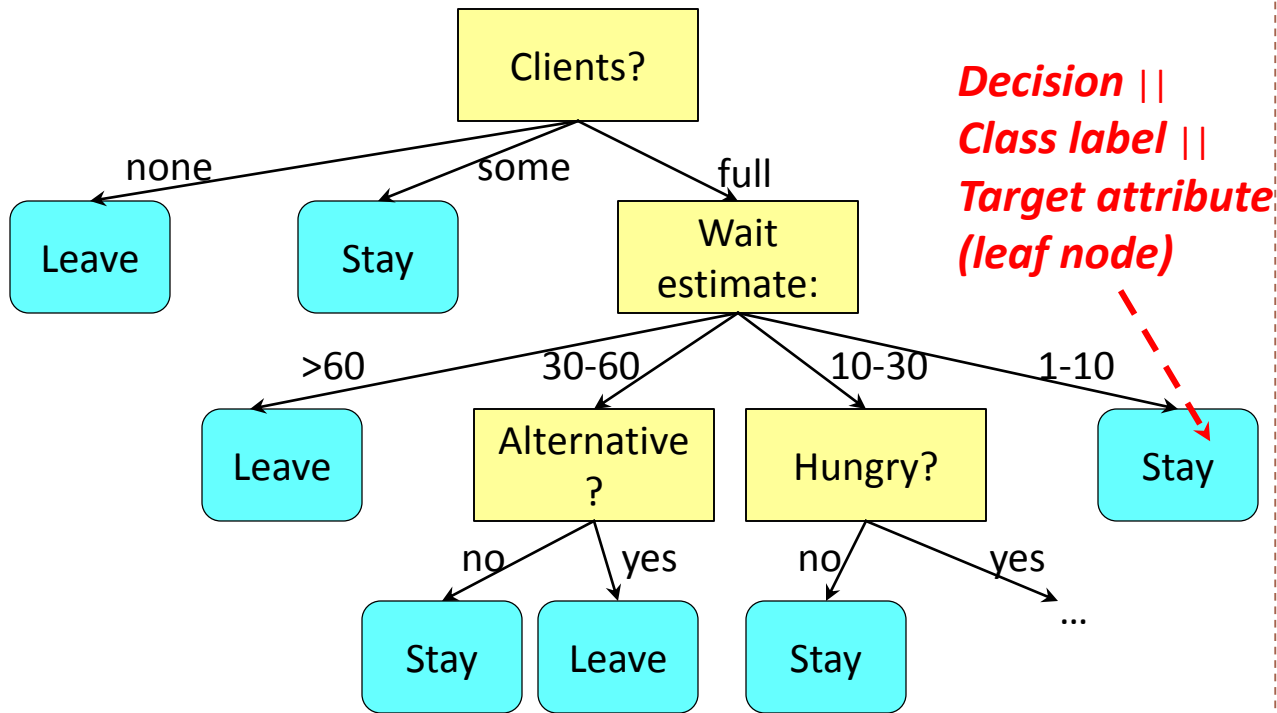
Decision tree – structure



Decision trees

- Supervised learning
- Tree induction algorithm
- Algorithm design issues
- Applications of decision trees

Decision tree – structure



Decision trees

- Supervised learning
- Tree induction algorithm
- Algorithm design issues
- Applications of decision trees